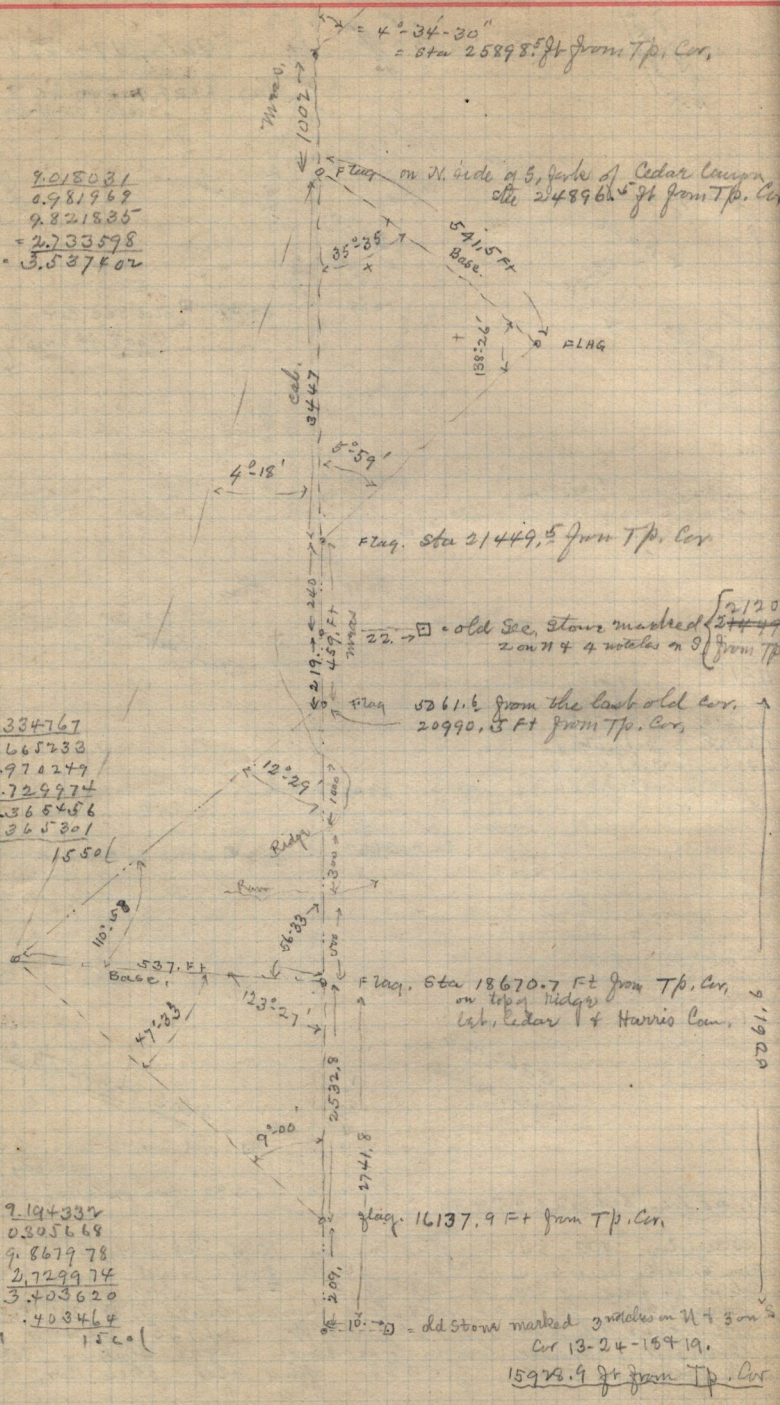


$\sin 5^{\circ}59' = \frac{9018081}{10000000}$
 $\cos = 0.981968$
 $\sin 138^{\circ}26' (41234) = 0.821885$
 $\cos = 0.57115$
 $3447 \cdot \cos = 2733598$
 $3447 \cdot \sin = 3537402$

$\sin 12^{\circ}29' = \frac{9334767}{10000000}$
 $\cos = 0.665233$
 $\sin 110^{\circ}53' (6900) = 0.970279$
 $\cos = 0.23974$
 $2319.8 \cdot \cos = 365801$
 $2319.8 \cdot \sin = 365801$

$47^{\circ}33'$
 $123^{\circ}27'$
 $179^{\circ}00'$
 $180^{\circ}00'$

$\sin 9^{\circ}00' = \frac{9194332}{10000000}$
 $\cos = 0.985668$
 $\sin 47^{\circ}33' = 0.867978$
 $\cos = 0.531$
 $2532 \cdot \cos = 3403620$
 $2532 \cdot \sin = 403464$



$\frac{21200}{22} = 963.6$
 $\frac{21200}{22} = 963.6$

5761.6

15923.9 ft from Tp. Cor.